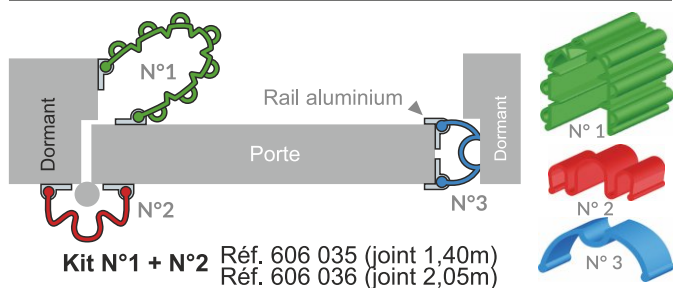
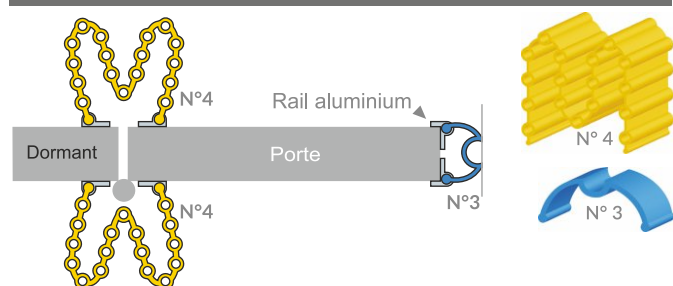


Porte ouverture à 90°



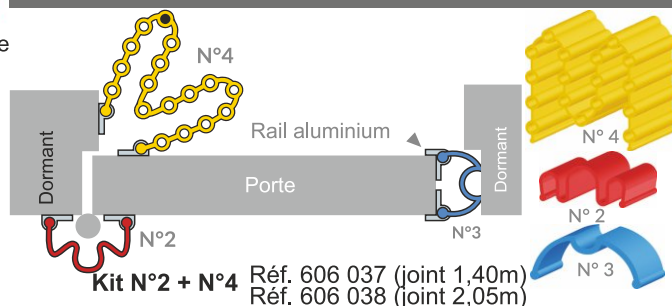
Porte double effet : ouverture à 180°



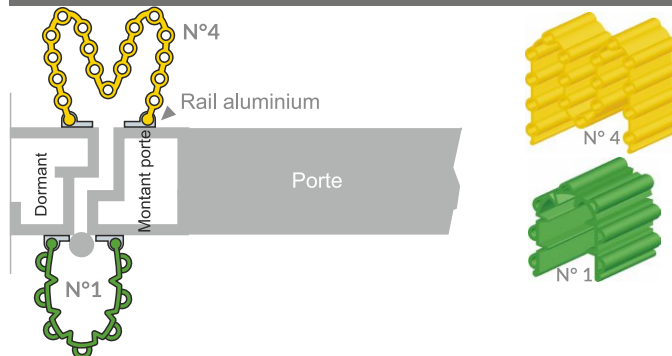
Recyclable



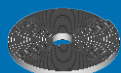
Porte ouverture à 180°



Porte : ouverture à 90° ou 180°



Pose par adhésif

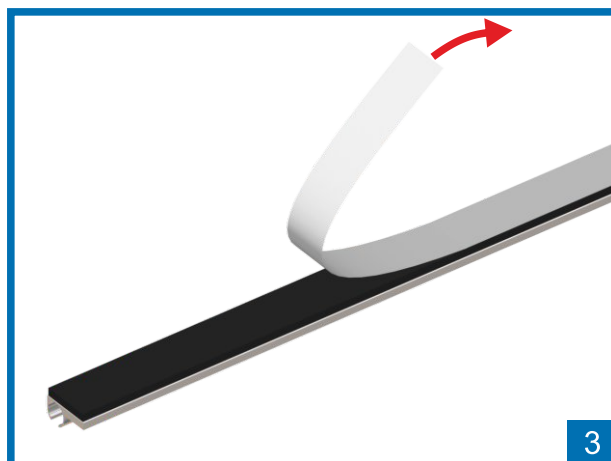
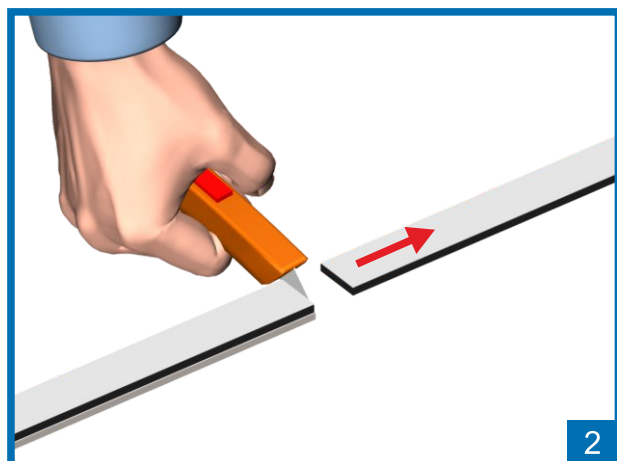
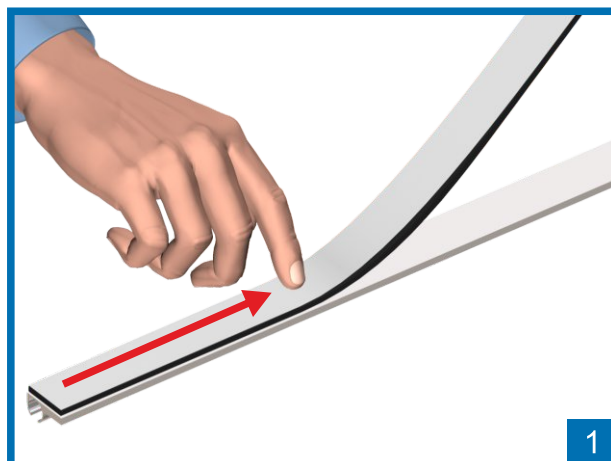


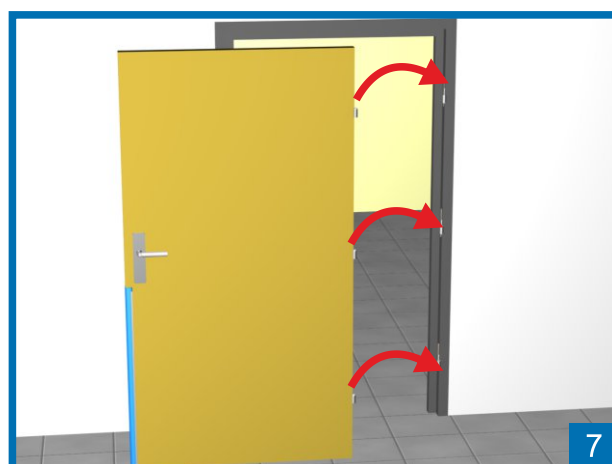
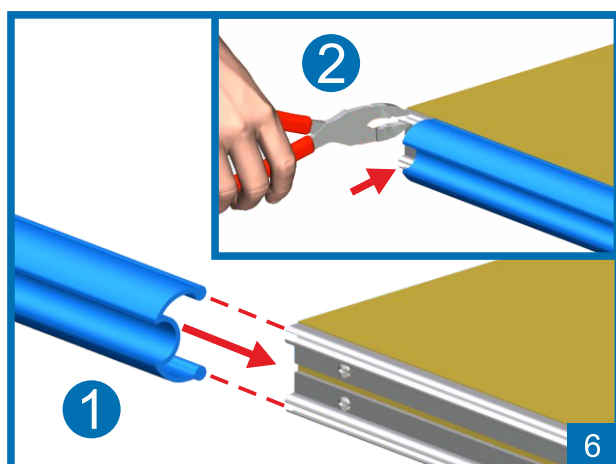
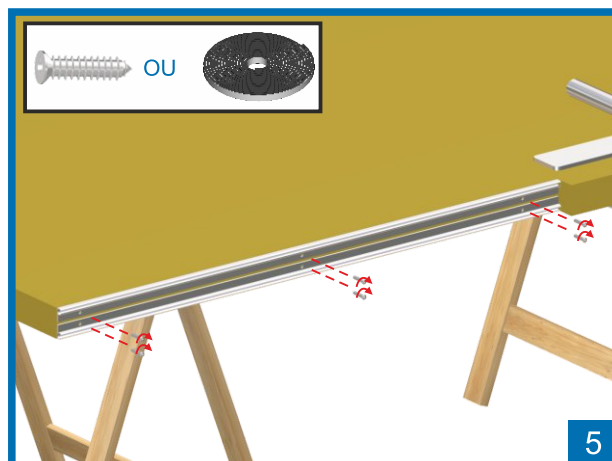
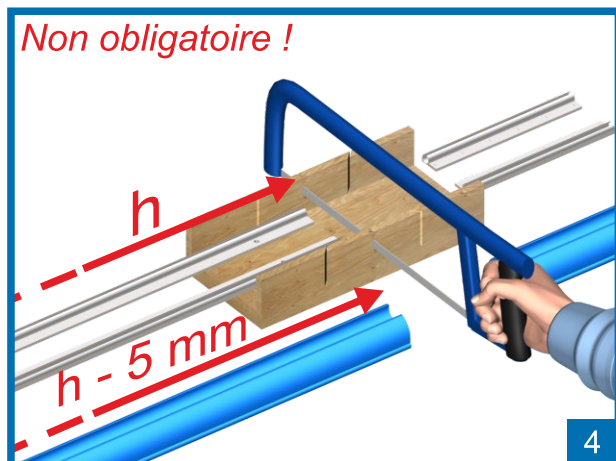
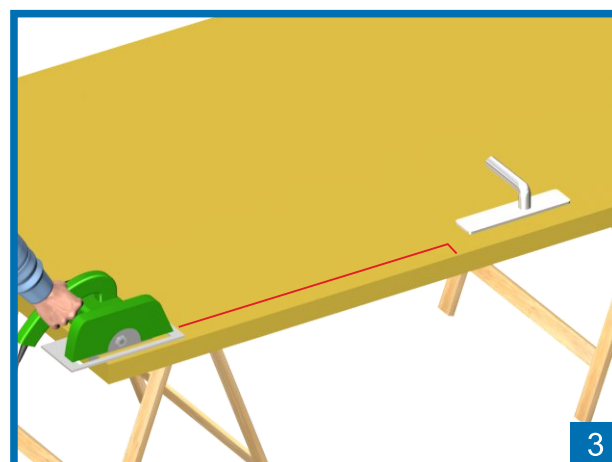
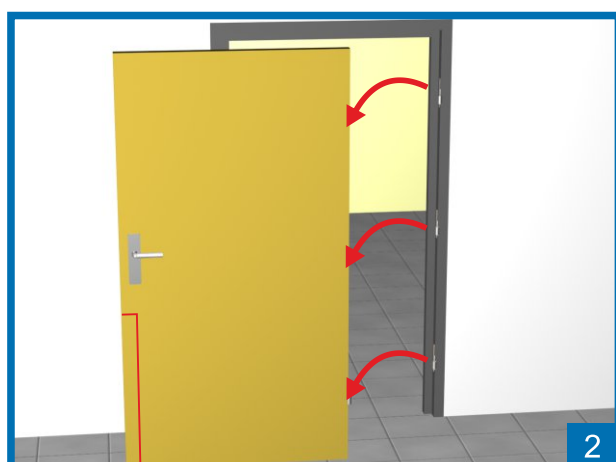
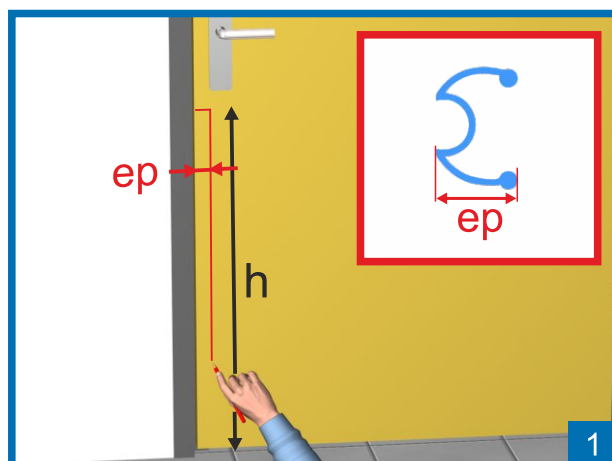
OU

Pose par vis



Pose par adhésif







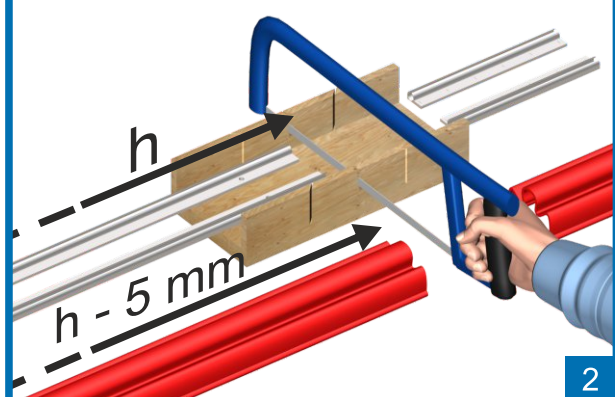
Réf. 606 004 (joint 1,40m)
 Réf. 606 003 (joint 2,05m)
 Réf. 606 001 (kit 1,40m)
 Réf. 606 002 (kit 2,05m)

Réservé coté paumelle, gond

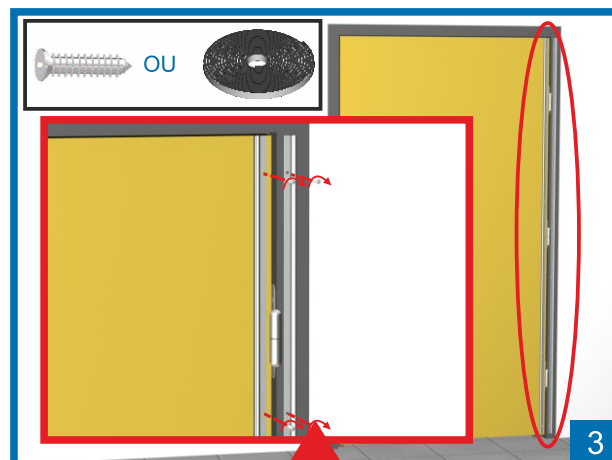


1

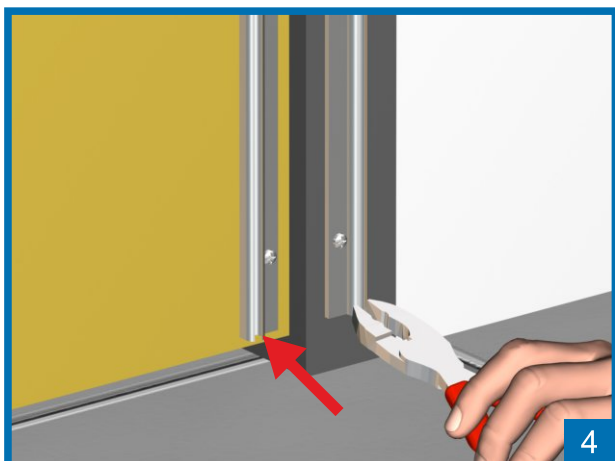
Non obligatoire !



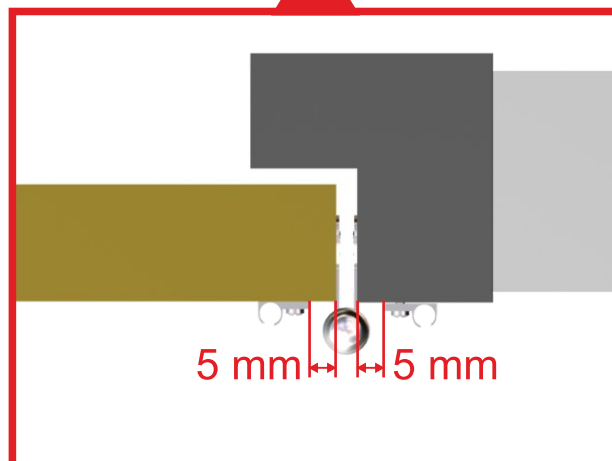
2



3



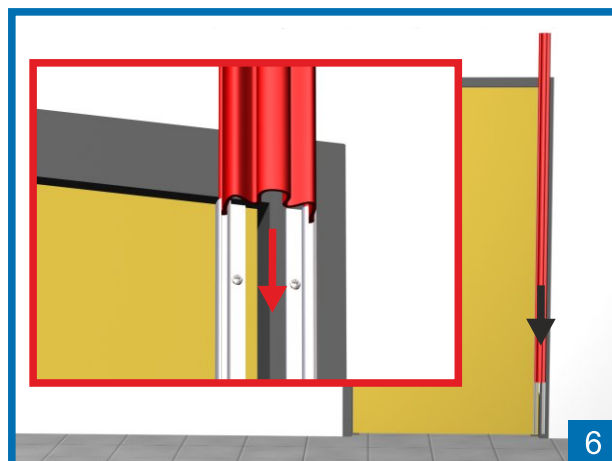
4



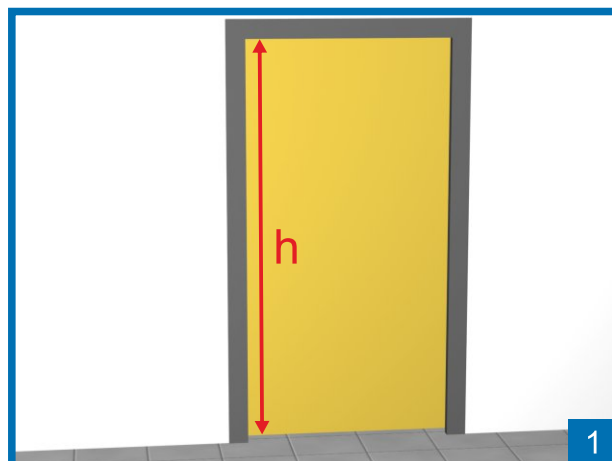
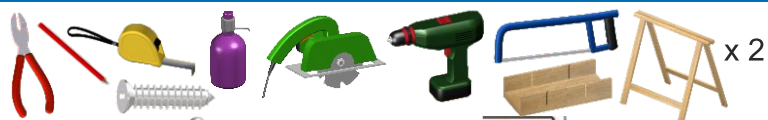
5 mm 5 mm



5



6



Non obligatoire !

